



Advancing Hypoxia Monitoring in the Gulf of Mexico

6th Annual NOAA/NGI Hypoxia Research Coordination Workshop

September 12, 2016

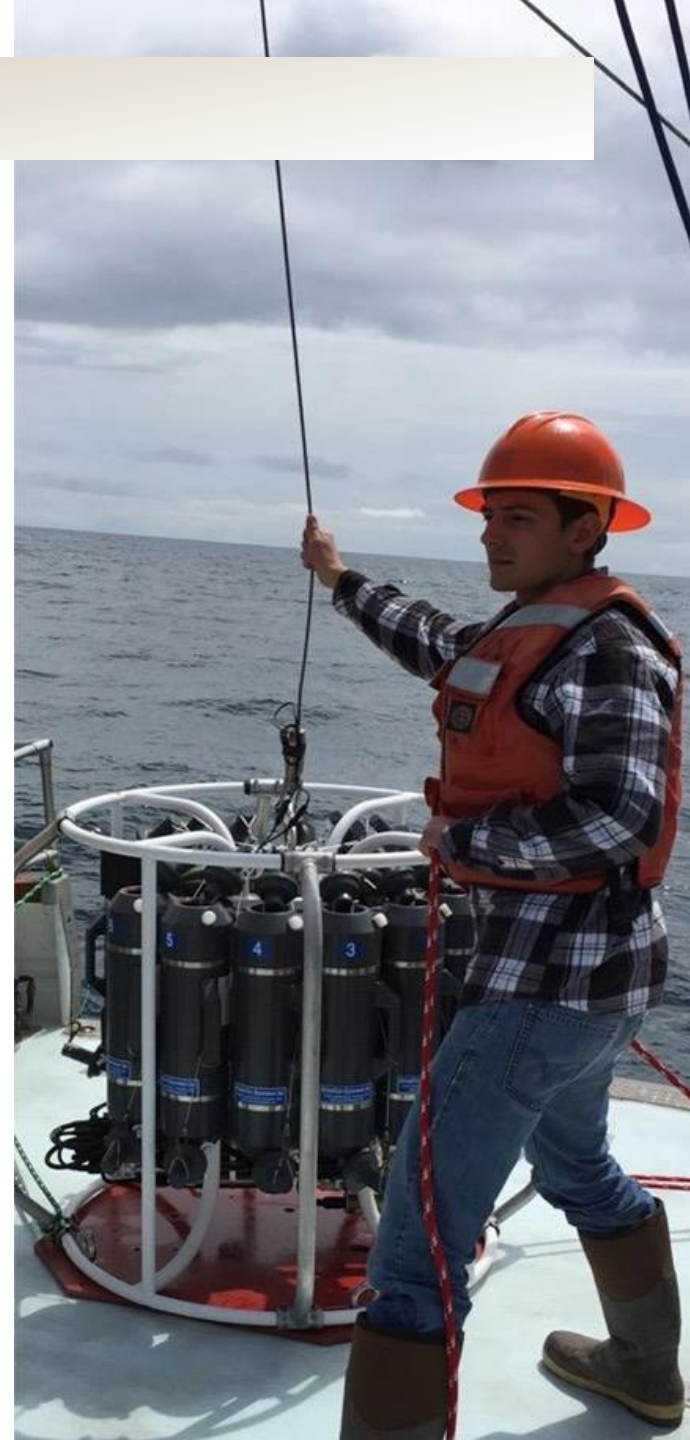
Mary Erickson | NOAA's National Centers for Coastal Ocean Science

Ellen Gilinsky | EPA's Office of Water



Workshop Goals

- Review partner requirements and interests
- Identify key hypoxia monitoring needs
- Identify partners to support key hypoxia monitoring needs
- Depart with clear needs identified, teams motivated to implement monitoring in a cooperative partnership



Supporting the Hypoxia Task Force: Monitoring

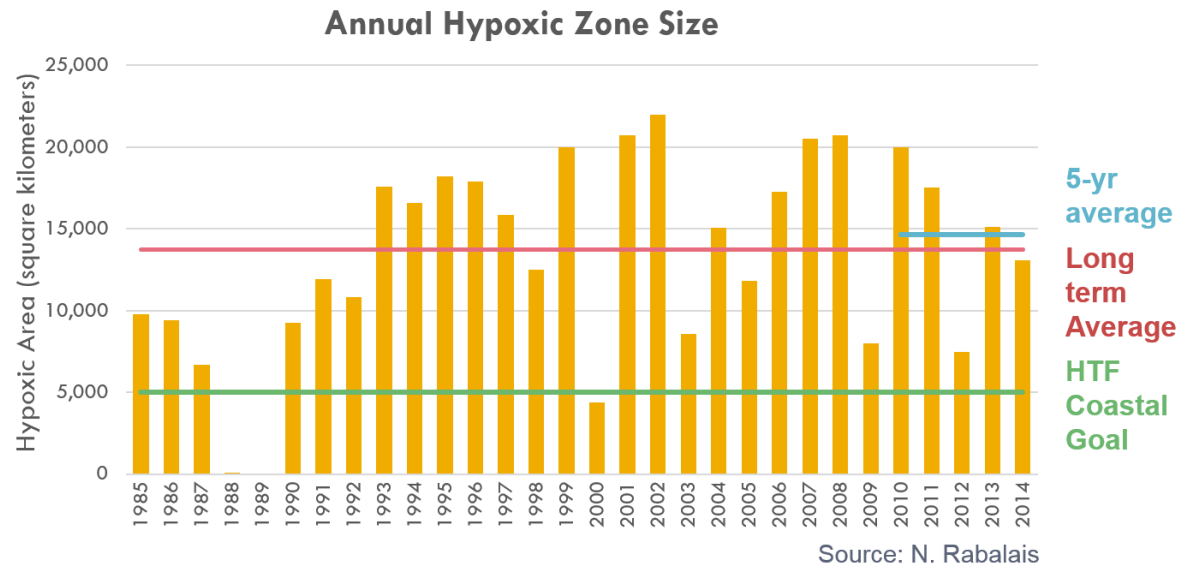
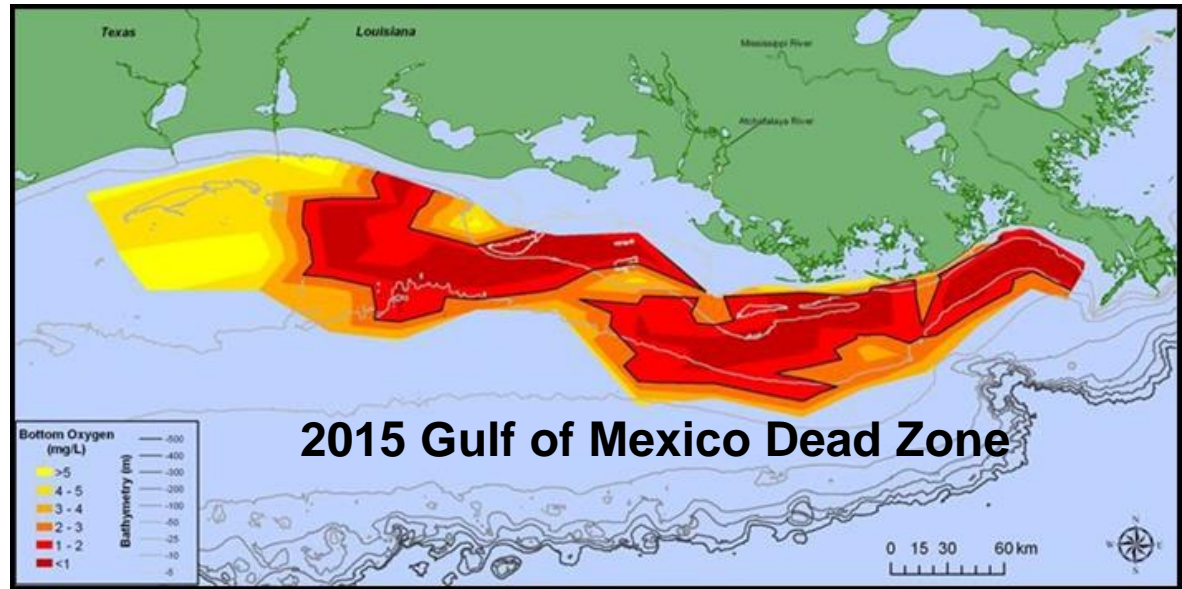


Mississippi River Gulf of Mexico Watershed Nutrient Task Force



Hypoxia Task Force Science Based Goal

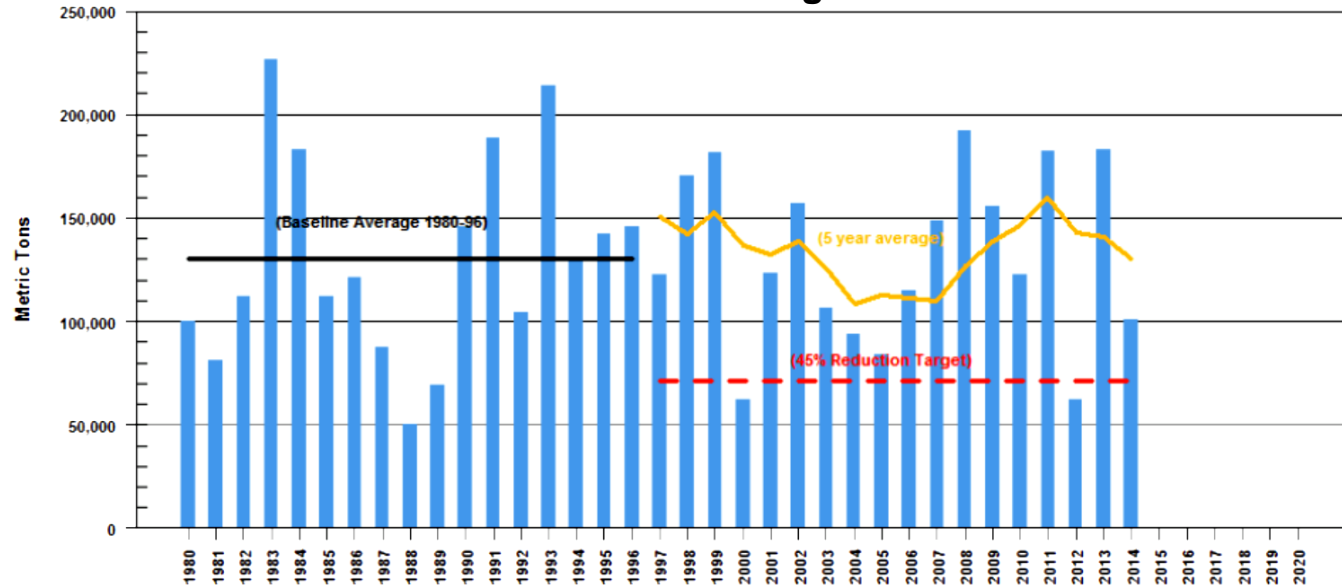
Coastal Goal:
 By 2035, reduce
 5-year running
 average size of the
 Gulf hypoxic zone to
 5,000 km²



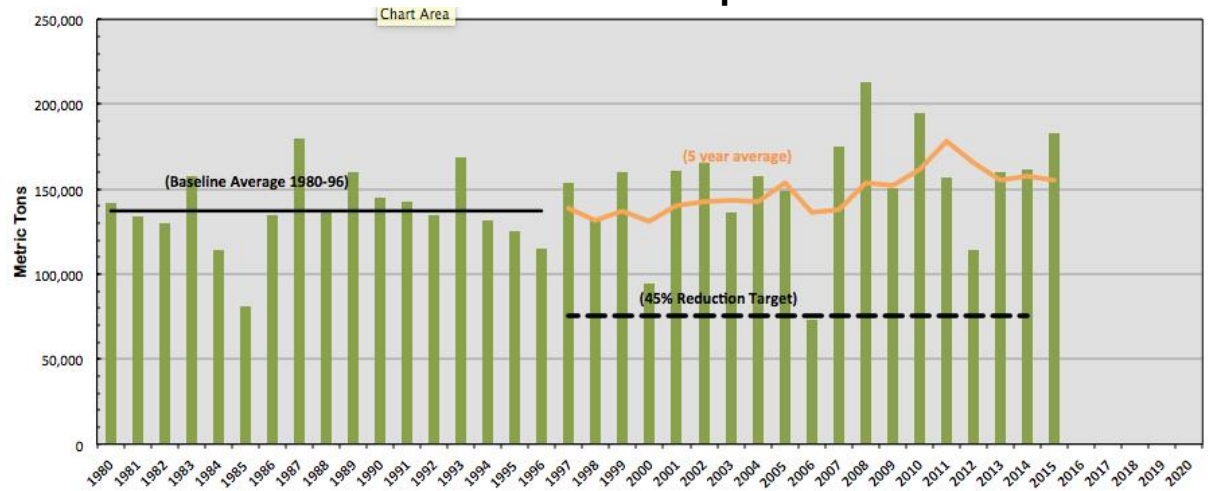
Hypoxia Task Force Science Based Goal

Interim Target:
20% reduction of
nitrogen and
phosphorus
loading by 2025
(USGS plots)

Annual Total Nitrogen Flux

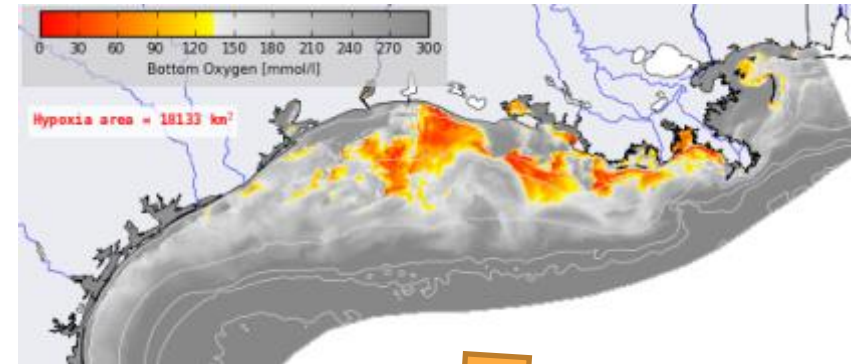
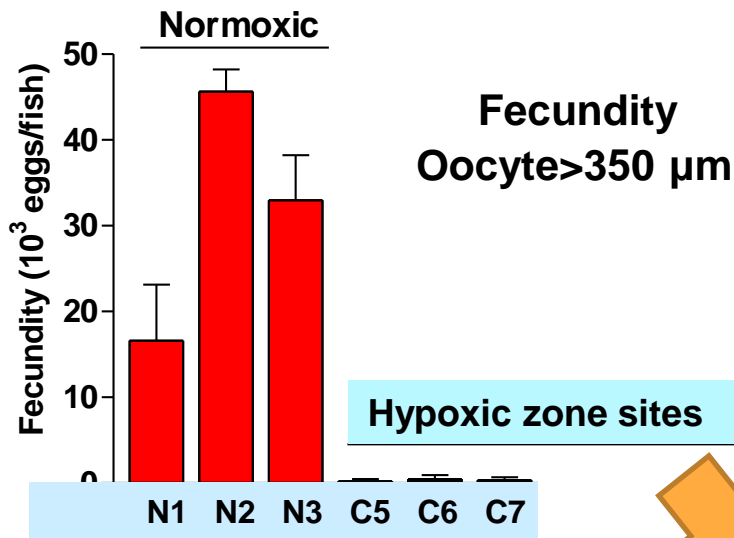


Annual Total Phosphorus Flux

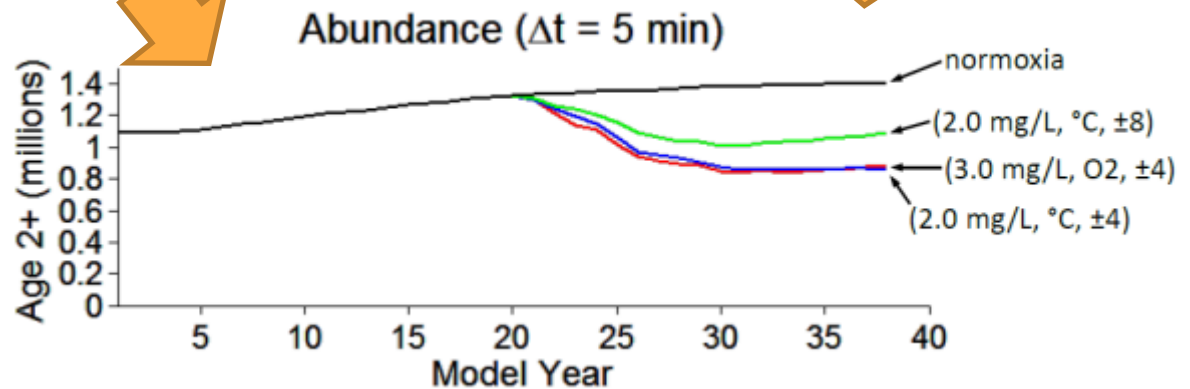


Understanding Impacts to Habitats and Living Resources

Tools provide guidance on impacts



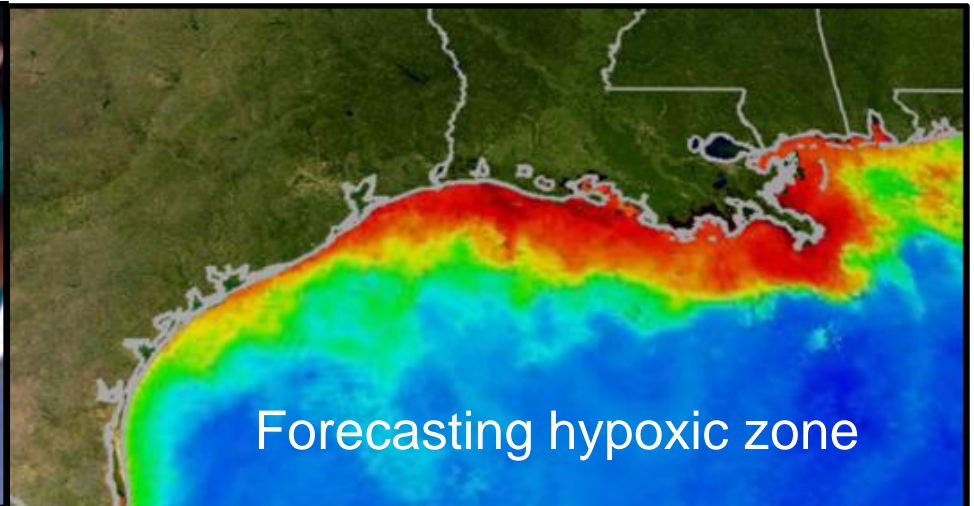
Atlantic Croaker Population Trend Scenarios



Current Progress



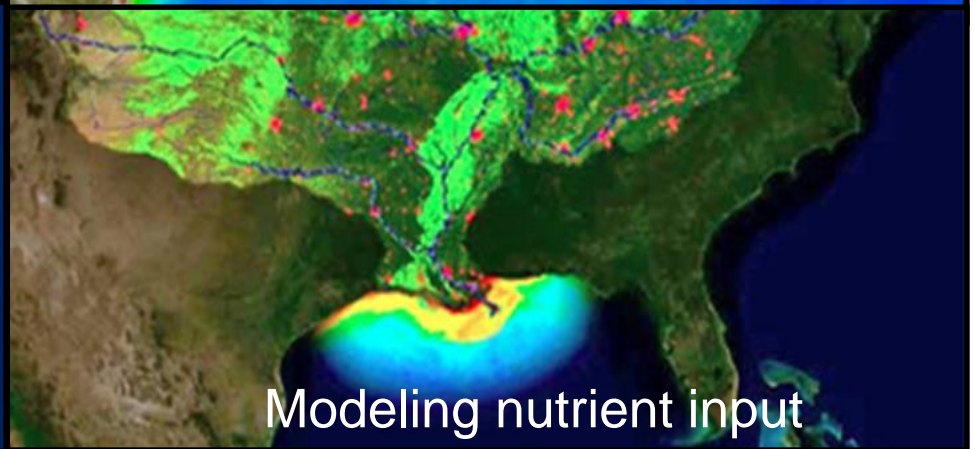
Glider Monitoring



Forecasting hypoxic zone

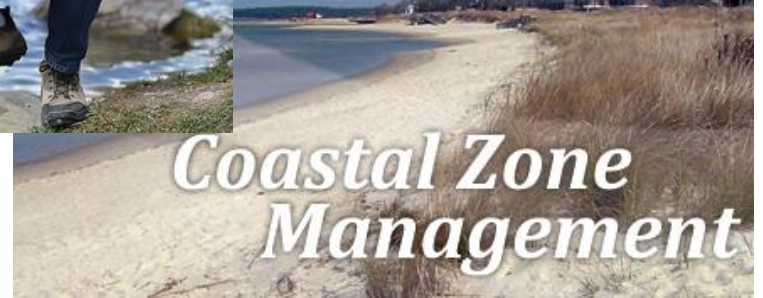
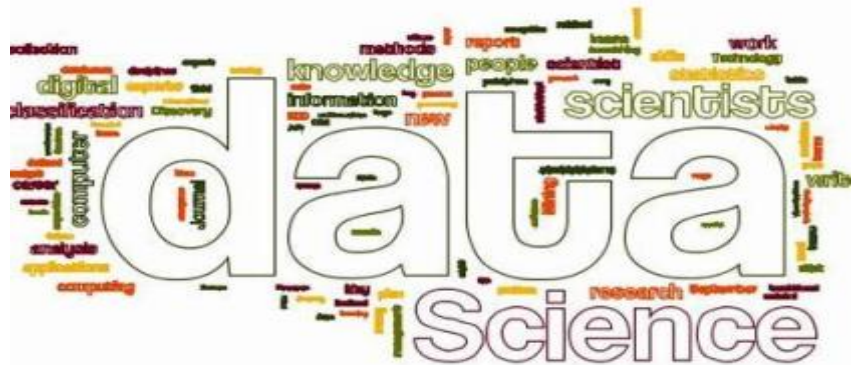


Annual monitoring



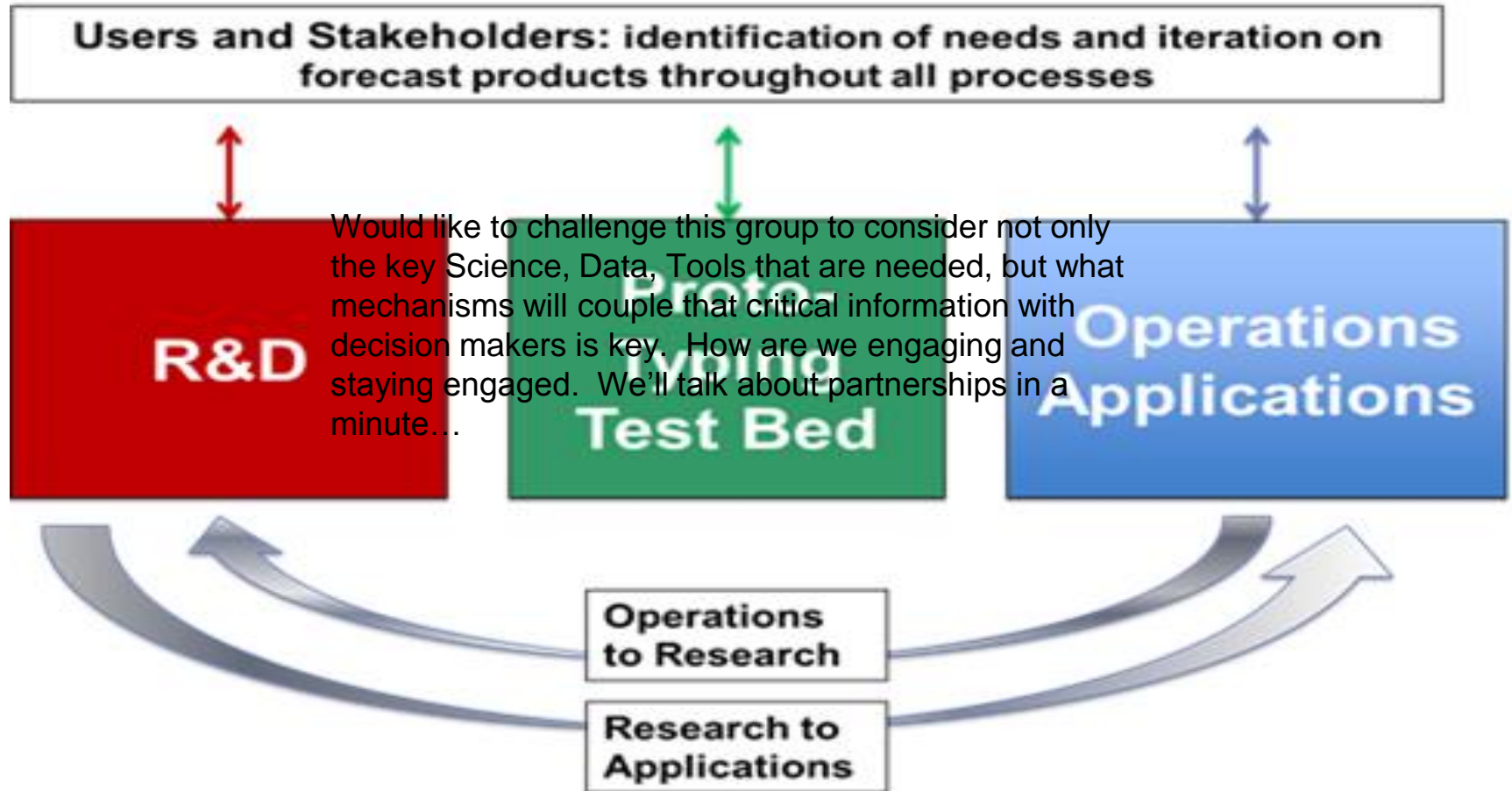
Modeling nutrient input

A Very Real Need



Next Steps - Transition

NOAA's Ecological Forecasting Roadmap



What Does Success Look Like?

Public health, natural resource management, and commercial and recreational opportunities are enhanced because of ecological forecasts.

- Existing ecological forecasts have been transitioned to operations
- Foundational infrastructure, observations, modeling, dissemination, and data management elements are institutionally supported
- Strategies are underway to address gaps in capacity



Developing Partnerships

Coordination across:

- Communities and missions
- Programs and platforms

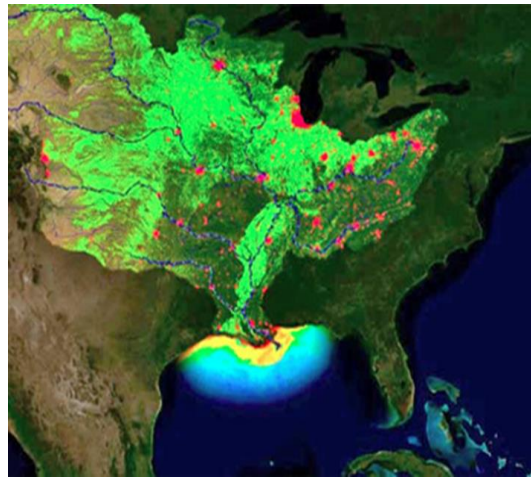


Coastal

Modeling/Forecasts

Monitoring

Impact Assessment



Watershed

Load reductions

Nutrient monitoring
innovations

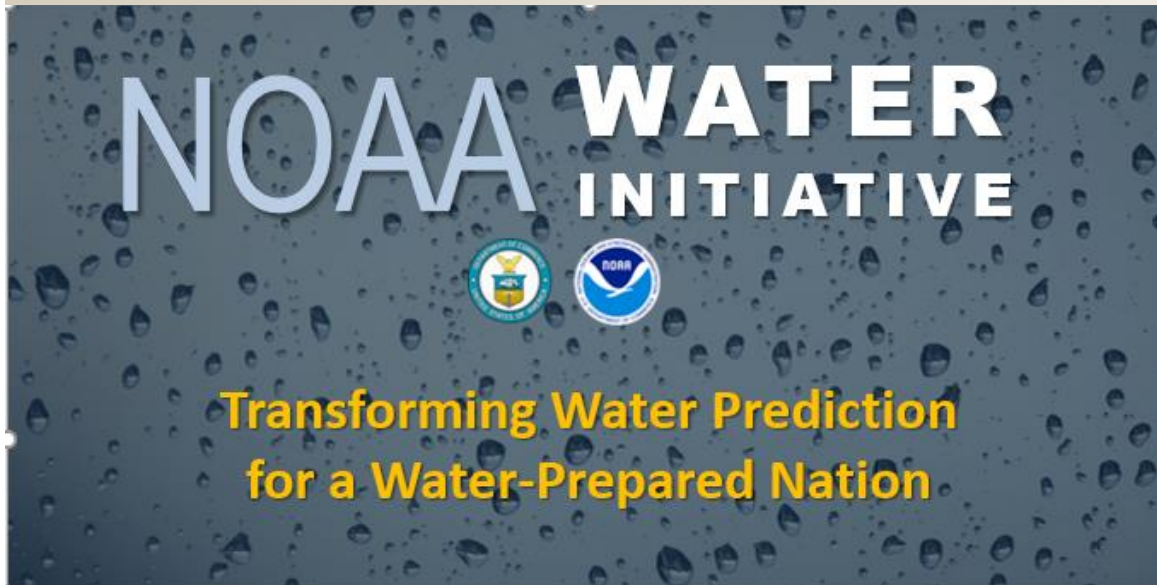
Nutrient reduction
tracking models

Ocean

Long term ocean changes



Next Steps: Partnerships, Opportunities



Stakeholder Needs

Flooding

Water Availability

Water Quality

Drought

Climate Variability

Integrate enhanced National Water Model with key water quality data sets, models and tools to begin water quality prediction

- ✧ *Incorporate water quality data from federal and State partners into NWM*
- ✧ *Link NWM output to NOAA ecological forecasting operations*
- ✧ *New decision support services for predicting water quality issues (HABs)*
- ✧ *New decision support services for emergencies such as chemical spills*
- ✧ ***NWC operations center expands to include water quality decision support services***

Keys to Progress

- Understand monitoring needs and supported management products
- Explore synergies with related programs
- Think creatively and long-term to support both institutional and collective needs in a cooperative program
- Stay involved post-workshop



Let's get started!



Ecoforecasting: Missions and Mandates

“Our job is to build an understanding of the Earth, the atmosphere, and the oceans to transform that understanding into critical environmental intelligence: timely, actionable information, developed from reliable and authoritative science, that gives us foresight about future conditions”

Dr. Kathy Sullivan
NOAA Administrator

EF Roadmap Policy Drivers

- **Harmful Algal Bloom and Hypoxia Research and Control Amendments Act of 2014**
- Chesapeake Bay Executive Order
- Coastal Zone Management Act
- Coral Reef Protection Executive Order/Coral Reef Conservation Act
- Magnuson-Stevens Fishery Conservation and Management Reauthorization Act
- Clean Water Act
- National Marine Sanctuaries Act
- Marine Mammal Protection Act



**WARNING
MUSSELS**
Do not eat shellfish from the beach. Mussels and clams are poisonous when eaten. Do not eat shellfish from the beach. Do not eat shellfish from the beach. Do not eat shellfish from the beach.

CLAMS
Do not eat shellfish from the beach. Clams are poisonous when eaten. Do not eat shellfish from the beach. Do not eat shellfish from the beach. Do not eat shellfish from the beach.

Hypoxia Task Force Members

5 Federal Agencies and Tribes:

- US Army Corps of Engineers
- US Environmental Protection Agency
- US Department of Agriculture
- US Geological Survey
- National Oceanic and Atmospheric Administration
- National Tribal Water Council

12 State Agencies:

- Arkansas
- Missouri
- Iowa
- Tennessee
- Minnesota
- Indiana
- Ohio
- Louisiana
- Illinois
- Mississippi
- Kentucky
- Wisconsin



Each state is represented by one of:

Agriculture agency, Environmental Quality agency, or Natural Resources agency



Stakeholder Priorities



Actionable Water Intelligence

High Resolution, Integrated Water Analyses, Predictions and Data

Transform information into intelligence by linking hydrologic, infrastructure, economic, demographic, environmental, and political data

Multi-Year Strategic Science and Services Plan

Integrated Water Prediction and the National Water Center (NWC)

Core Capability

Centralized Water Forecasting

National Water Model (NWM) operational [V1.0 July 2016]

- ❖ Water forecasts for 2.7 million stream reaches
- ❖ Expand from only flow/stage forecasts to forecasts of **full water budget**
- ❖ **100 million people get a terrestrial water forecast for first time**
- ❖ Forecasts linked to geospatial information to **provide water intelligence**

Key Enhancement

Flash Flood and Urban Hydrology

Enhance NWM with nested hyper-resolution zoom capability and urban hydrologic processes

- ❖ Heightened focus on regions of interests (e.g. follow storms)
- ❖ **Street level flood inundation forecasts** for selected urban demonstration areas
- ❖ NWC increases guidance to NWS field offices to **improve consistency and services for flash floods**

Major Integration

Coastal Total Water Level

Couple NWM with marine models to predict combined storm surge, tide, and riverine effects

- ❖ **More complete picture of coastal storm impacts**
- ❖ **Summit-to-sea** water prediction information linked to geospatial risk and vulnerability
- ❖ **New service delivery model implemented** – increased stakeholder engagement and integrated information
- ❖ **NWC operations center opens and provides national decision support services and situational awareness**

Key Enhancement

Dry Side: Drought and Post-Fire

Couple NWM with groundwater and transport models to predict low flows, drought and fire impacts

- ❖ Add NWM processes that capture subsurface water movement and storage during dry conditions
- ❖ Add NWM ability to track constituents (e.g. sediment, contaminants, nutrients) through stream network
- ❖ New decision support services for water shortage situations and waterborne transport
- ❖ **NWC operations center expands to include drought and post-fire decision support services**

Major Integration

Water Quality

Integrate enhanced NWM with key water quality data sets, models and tools to begin water quality prediction

- ❖ Incorporate water quality data from federal and State partners into NWM
- ❖ Link NWM output to NOAA ecological forecasting operations
- ❖ New decision support services for predicting water quality issues such as Harmful Algal Blooms
- ❖ New decision support services for emergencies such as chemical spills
- ❖ **NWC operations center expands to include water quality decision support services**